

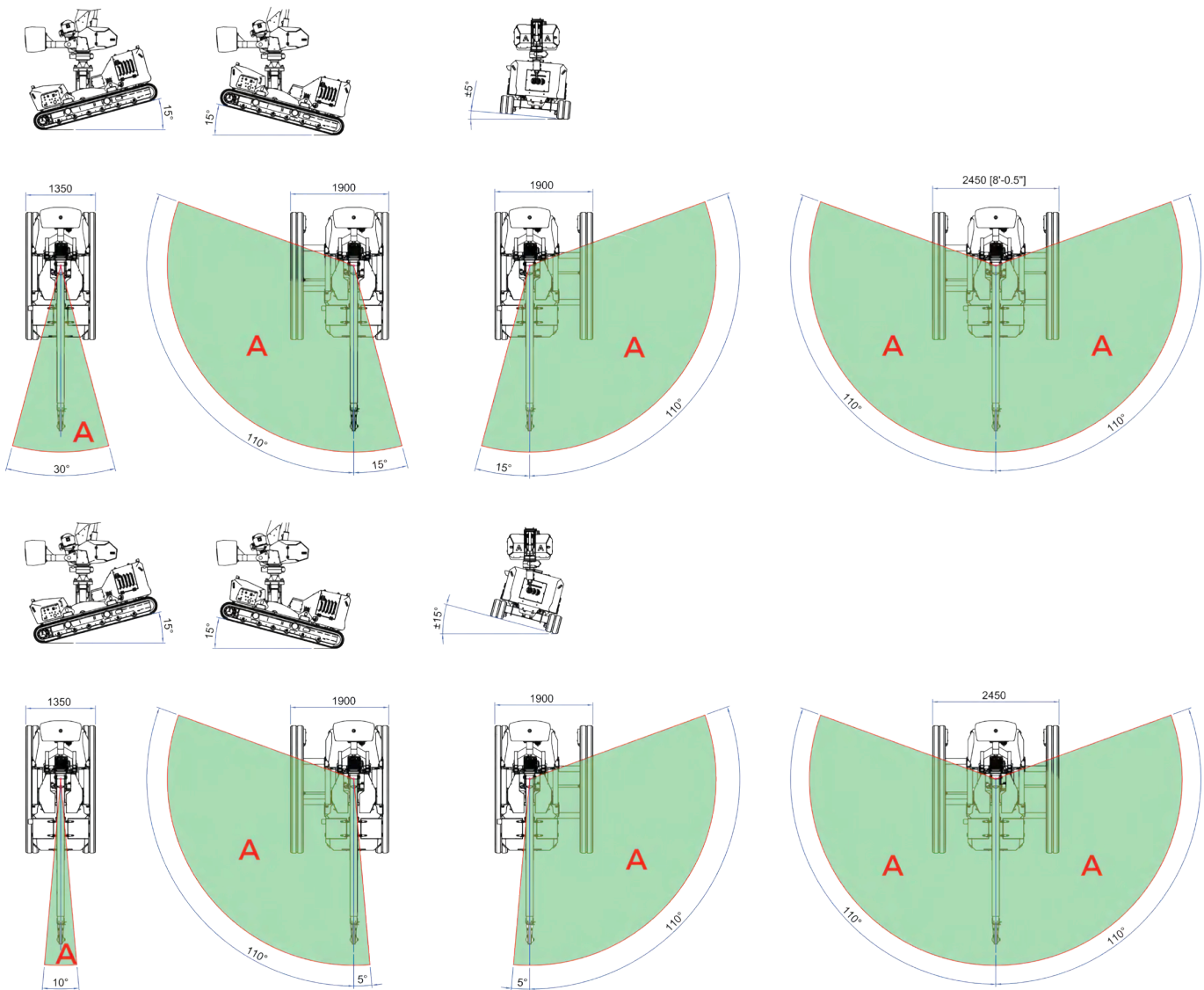
## Gru elettriche semoventi

### Dati tecnici

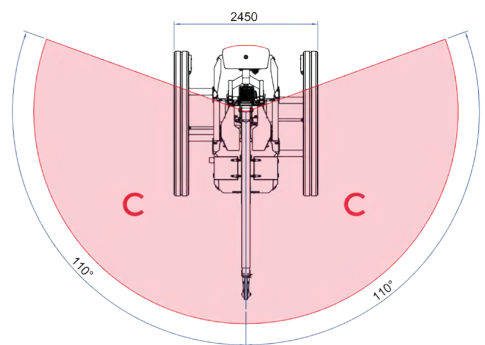
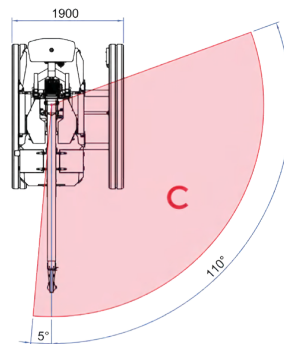
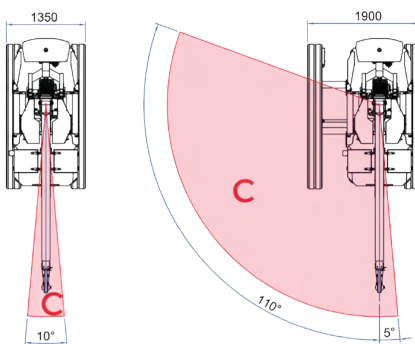
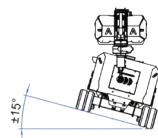
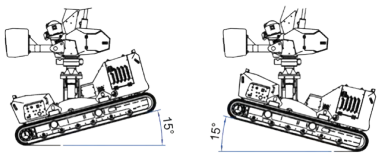
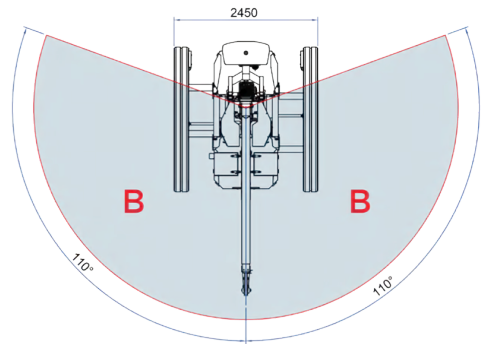
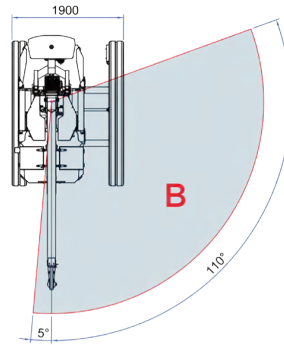
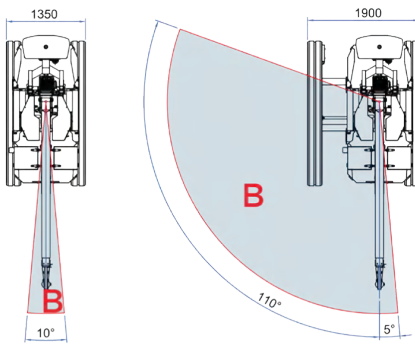
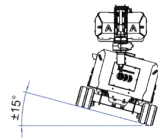
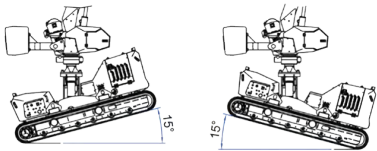
Altezza massima di sollevamento	7,7 m
Altezza massima di traslazione	7,7 m
Angolo di rotazione torretta	+/-110°
Capacità di prelievo e trasporto	990 Kg
Lunghezza richiusa con zavorra	4,32 m
Lunghezza richiusa senza zavorra	4,22 m
Larghezza minima richiusa	1,35 m
Larghezza massima di lavoro	2,45 m
Altezza minima richiusa	1,91 m
Livellamento longitudinale	+/- 15°
Livellamento laterale	+/- 15°
Pendenza massima superabile	25°
Pendenza laterale massima	25°
Velocità traslazione (rapida)	2,5 km/h
Velocità sicurezza	0,3 km/h
Lunghezza cavo verricello	30 m
Peso totale con zavorra	3850 kg
Peso totale senza zavorra	2850 kg



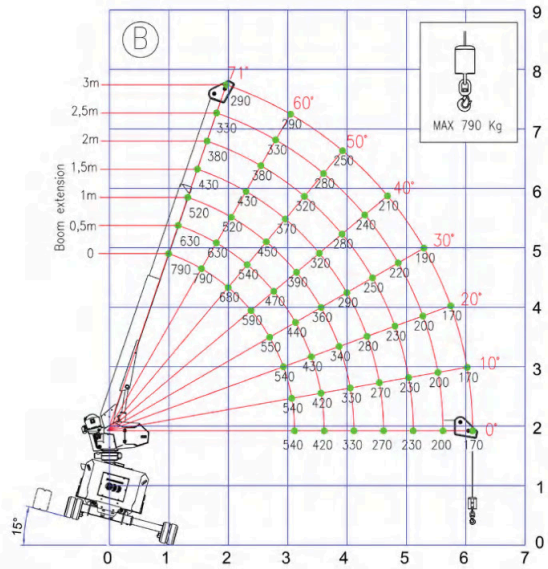
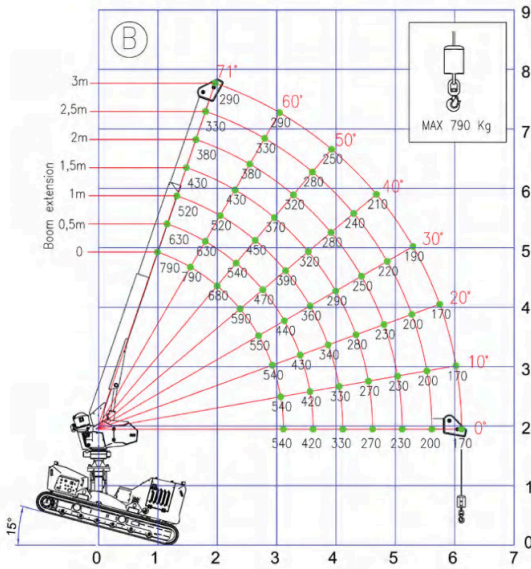
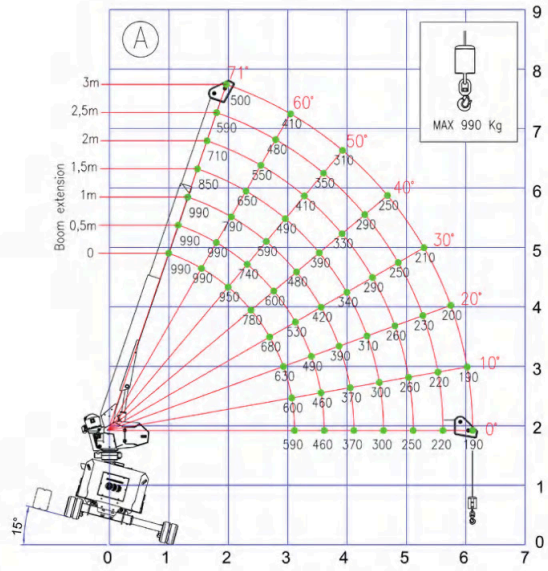
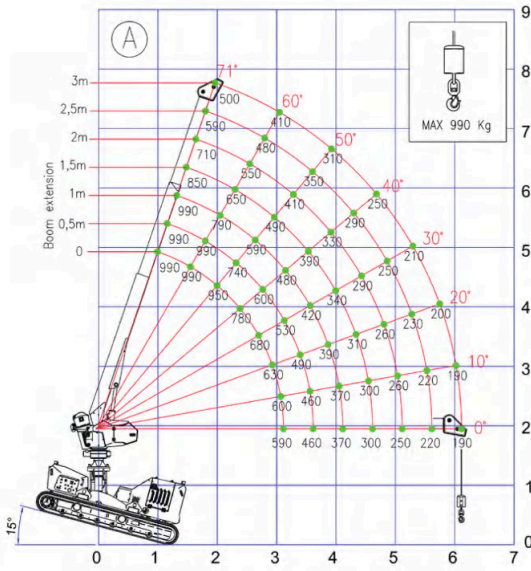
## Gru elettriche semoventi



## Gru elettriche semoventi

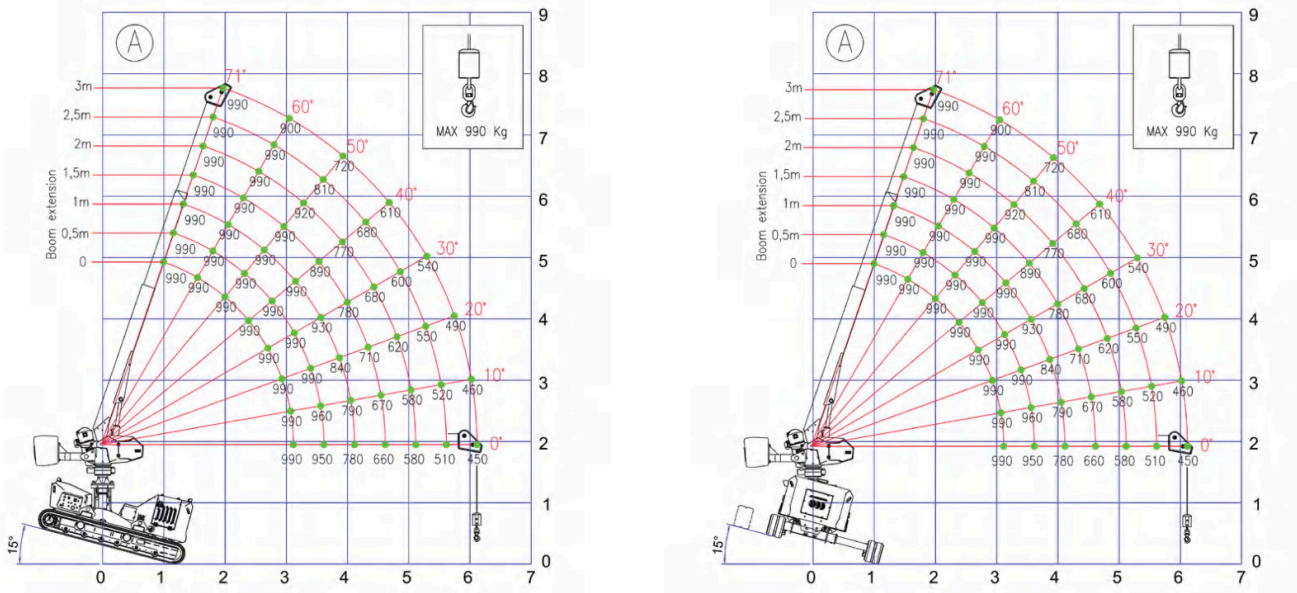
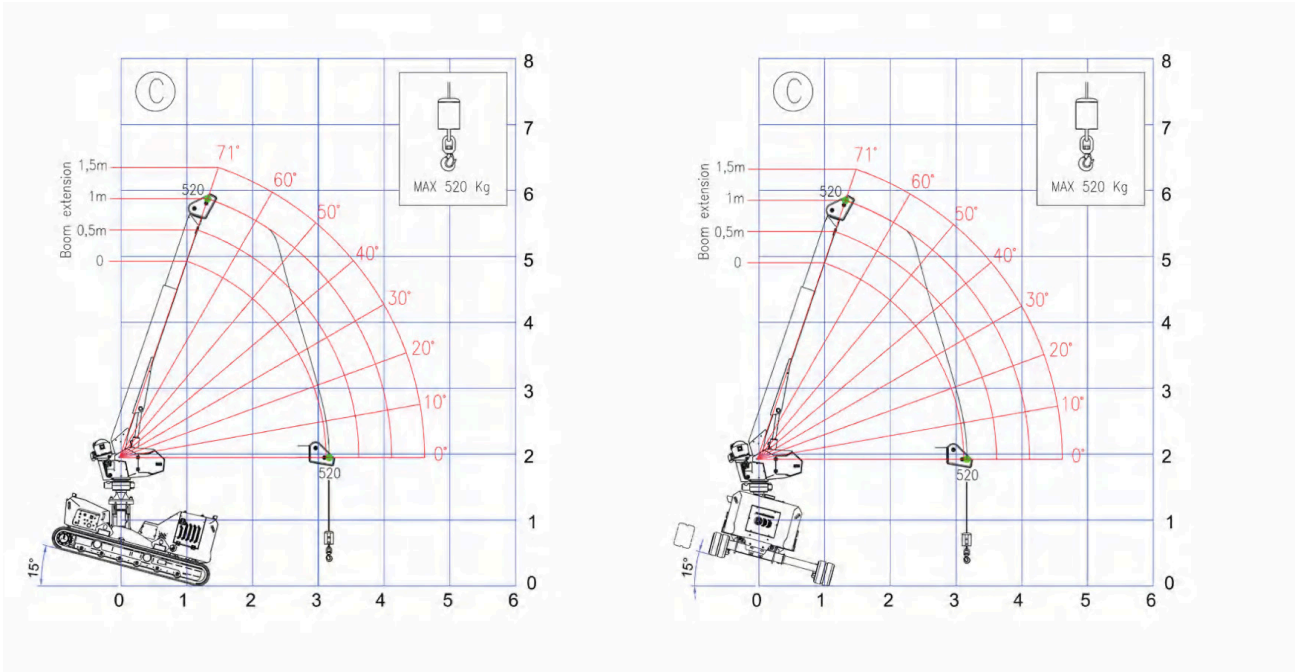


## Gru elettriche semoventi





## Gru elettriche semoventi



## Gru elettriche semoventi

